

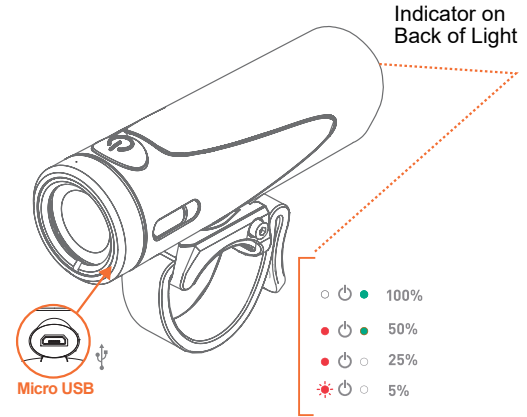
VIS/URBAN1000 (Fast Charge)

BIKE HEADLIGHT MANUAL



FL1 Standard
Tested & certified to the ANSI FL-1 Standard.

	1000	500	250	500
LUMENS	1000	500	250	500
h/ min	1:30	3:00	6:00	12:00
RACE MODE	HIGH: 1.5 Hours @1000Lumens		LOW: 3 Hours @ 500Lumens	

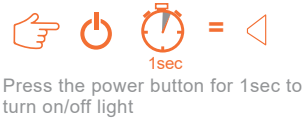


POWER MODES - Press power button to activate different modes

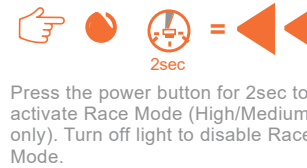
-
-
-
1. High (1000 Lumens)
 2. Medium (500 Lumens)
 3. Low (250 Lumens)
 4. Safe Pulse (500 Lumens)

VIS USE

POWER ON/OFF

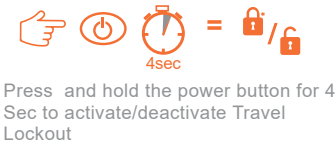


RACE MODE*



*Urban/VIS 500 Does not come with Race Mode

LOCKOUT MODE

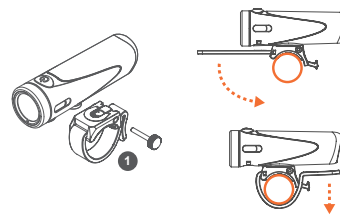


MOUNTING THE LIGHT

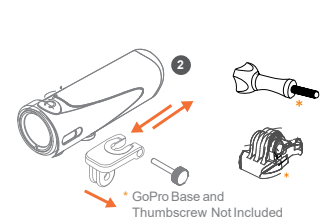
1. REMOVE THE LIGHT FROM THE MOUNT.
 - a. Unthread the Thumbscrew from the mount
 - b. Holding mount in one hand, side light off of mount
2. INSTALL THE GOPRO MOUNT.
 - a. Slide the GoPro mount on to the plastic round mount on the bottom of the light head.
 - b. Insert the provided thumbscrew and tighten by hand.

MOUNTING VERSATILITY

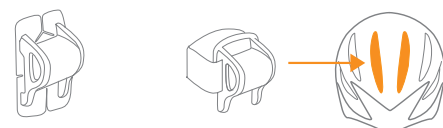
QUICK RELEASE BAR MOUNT



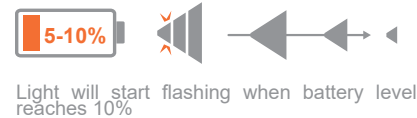
GoPro INTERFACE



ADDITIONAL MOUNTS AVAILABLE



LOW BATTERY WARNING & SHUTOFF



LESS THAN 5% REMAINING



2 Year Warranty When Purchased Through an Authorized Dealer
For more information visit <https://lightandmotion.com/pages/warranty-policy>

