

VIS / URBAN

BIKE HEADLIGHT MANUAL

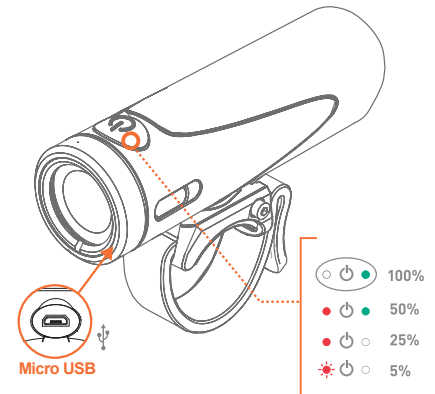


FL1 Standard
Tested & certified to the ANSI FL-1 Standard.

FL1 STANDARD

LUMENS	1000	700	500	RUN-TIME
HIGH	1000	700	500	1.5h
MED	500	350	250	3h
LOW	250	125	125	6h
SAFE PULSE	500	350	125	12h

*Specifications subject to change.



Micro USB

5 HOURS
MICRO USB RECHARGEABLE

IP67
WATER RESISTANT

POWER MODES - Press power button to activate different modes



1. High
2. Medium
3. Low
4. Safe Pulse

VIS USE

POWER ON/OFF



Press the power button for 1sec to turn on/off your light

RACE MODE*



Press the power button for 2sec to activate Race Mode (High/Medium only). Turn off your light to disable Race Mode.

*Urban/VIS 500 Does not come with Race Mode

LOCKOUT MODE



Press and hold the power button for 4 Sec to activate/deactivate Travel Lockout

MOUNTING THE LIGHT

1. REMOVE THE LIGHT FROM THE MOUNT.

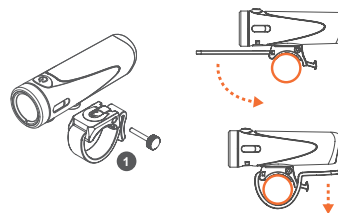
- Unthread the Thumbscrew from the mount
- Holding mount in one hand, slide light off of mount

2. INSTALL THE GOPRO MOUNT.

- Slide the GoPro mount on to the plastic round mount on the bottom of the light head.
- Insert the provided thumbscrew and tighten by hand.

MOUNTING VERSATILITY

QUICK RELEASE BAR MOUNT



GoPro INTERFACE

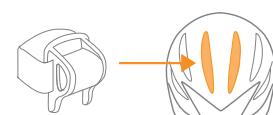


*GoPro Base and Thumbscrew Not Included

ADDITIONAL MOUNTS AVAILABLE



Stick-On Mount



Helmet Mount

LOW BATTERY WARNING & SHUTOFF



Light will start flashing when battery level reaches 10%

LESS THAN 5% REMAINING



Low battery/Auto-shutoff Warning: 12 seconds of the light flashing, then dimming, then turning off

2 Year Warranty When Purchased Through an Authorized Dealer

For more information visit <https://lightandmotion.com/pages/warranty-policy>

