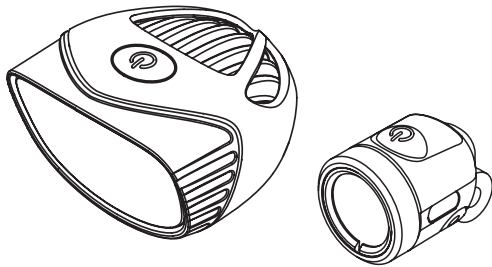
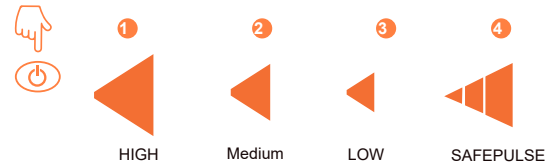


# Seca /Adventure

## BIKE HEADLIGHT MANUAL

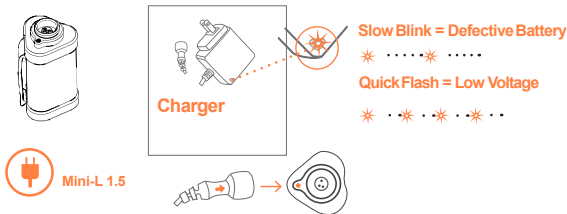


### SECA/ADVENTURE Operation/Modes

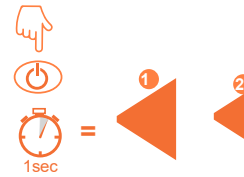


Press the power button to turn on light and switch through various modes

### CHARGING



### RACE MODE



**Race Mode:**  
Push and hold the button for one second. Race mode only has 2 settings: High and Medium, with a single click cycling between them.  
**To turn off Race Mode:** Hold both buttons for 1 seconds.

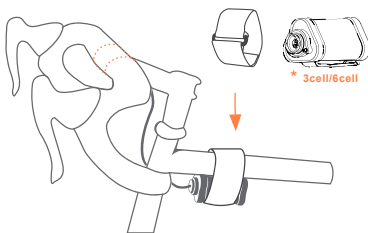
### HOLD-OFF



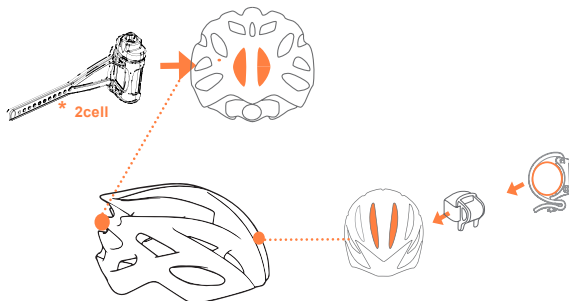
**Turn Off:**  
Press the Power button for 2 Sec to turn off light

### INSTALLING THE BATTERY

#### Handlebar mount- Velcro Strap



#### Helmet Mount - 2 Cell battery



### LI-ION BATTERY (Required)

- 2-Cell Battery\*      \*The Seca is not compatible with a 2cell battery.
- 3-Cell Battery
- 6-Cell battery

### LOW BATTERY WARNING & SHUTOFF



Light will start flashing when battery level reaches 10%

### LESS THAN 5% REMAINING



Low battery/Auto-shutoff Warning: 12 seconds of the light flashing, then dimming, then turning off

